

# Dazzling

Designs & Apparel Inc.

| <u>Brand</u>     | <u>Item Number</u> | <u>Item Description</u>      | <u>Actual<br/>Quantity</u> |
|------------------|--------------------|------------------------------|----------------------------|
| American Apparel | 3008-Black-12-18m  | Infant Tank - Black (12-18m) | 0                          |
| American Apparel | 3008-Black-18-24m  | Infant Tank - Black (18-24m) | 12                         |
| American Apparel | 3008-Black-3-6m    | Infant Tank - Black (3-6m)   | 15                         |
| American Apparel | 3008-Black-6-12m   | Infant Tank - Black (6-12m)  | 9                          |
| American Apparel | 3008-Pink-12-18m   | Infant Tank - Pink (12-18m)  | 52                         |
| American Apparel | 3008-Pink-18-24m   | Infant Tank - Pink (18-24m)  | 50                         |
| American Apparel | 3008-Pink-3-6m     | Infant Tank - Pink (3-6m)    | 54                         |
| American Apparel | 3008-Pink-6-12m    | Infant Tank - Pink (6-12m)   | 57                         |
| American Apparel | 3008-White-12-18m  | Infant Tank - White (12-18m) | 51                         |
| American Apparel | 3008-White-18-24m  | Infant Tank - White (18-24m) | 39                         |
| American Apparel | 3008-White-3-6m    | Infant Tank - White (3-6m)   | 71                         |
| American Apparel | 3008-White-6-12m   | Infant Tank - White (6-12m)  | 31                         |
|                  | <b>3008</b>        | <b>TANK - INFANT</b>         | <b>441</b>                 |
| American Apparel | 3108-Black-2       | Toddler Tank - Black (2)     | 5                          |
| American Apparel | 3108-Black-4       | Toddler Tank - Black (4)     | 22                         |
| American Apparel | 3108-Black-6       | Toddler Tank - Black (6)     | 0                          |
| American Apparel | 3108-Pink-2        | Toddler Tank - Pink (2)      | 43                         |
| American Apparel | 3108-Pink-4        | Toddler Tank - Pink (4)      | 6                          |
| American Apparel | 3108-Pink-6        | Toddler Tank - Pink (6)      | 21                         |
| American Apparel | 3108-White-2       | Toddler Tank - White (2)     | 1                          |
| American Apparel | 3108-White-4       | Toddler Tank - White (4)     | 0                          |
| American Apparel | 3108-White-6       | Toddler Tank - White (6)     | 7                          |
|                  | <b>3108</b>        | <b>TANK - TODDLER</b>        | <b>105</b>                 |
| American Apparel | 3208-Black-10      | Youth Tank - Black (10)      | 10                         |
| American Apparel | 3208-Black-8       | Youth Tank - Black (8)       | 6                          |
| American Apparel | 3208-Pink-10       | Youth Tank - Pink (10)       | 9                          |
| American Apparel | 3208-Pink-12       | Youth Tank - Pink (12)       | 21                         |
| American Apparel | 3208-Pink-8        | Youth Tank - Pink (8)        | 1                          |
| American Apparel | 3208-White-10      | Youth Tank - White (10)      | 8                          |
| American Apparel | 3208-White-12      | Youth Tank - White (12)      | 5                          |
| American Apparel | 3208-White-8       | Youth Tank - White (8)       | 7                          |
|                  | <b>3208</b>        | <b>TANK - YOUTH</b>          | <b>67</b>                  |



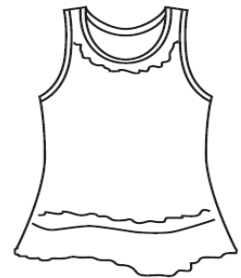
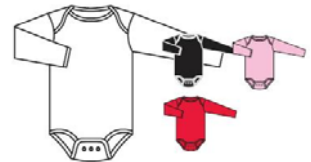
| <u>Brand</u>     | <u>Item Number</u>     | <u>Item Description</u>                           | <u>Actual Quantity</u> |
|------------------|------------------------|---|------------------------|
| American Apparel | 3308-Aqua-2xl          | Adult Tank - Aqua (2xl)                           | 9                      |
| American Apparel | 3308-Asphalt-2xl       | Adult Tank - Asphalt (2xl)                        | 9                      |
| American Apparel | 3308-Baby Blue-lg      | Adult Tank - Baby Blue (lg)                       | 5                      |
| American Apparel | 3308-Baby Blue-m       | Adult Tank - Baby Blue (m)                        | 7                      |
| American Apparel | 3308-Baby Blue-s       | Adult Tank - Baby Blue (s)                        | 9                      |
| American Apparel | 3308-Baby Blue-xl      | Adult Tank - Baby Blue (xl)                       | 4                      |
| American Apparel | 3308-BabyBlue-2xl      | Adult Tank - Baby Blue (2xl)                      | 0                      |
| American Apparel | 3308-Black-2xl         | Adult Tank - Black (2xl)                          | 45                     |
| American Apparel | 3308-Black-lg          | Adult Tank - Black (lg)                           | 7                      |
| American Apparel | 3308-Black-m           | Adult Tank - Black (m)                            | 6                      |
| American Apparel | 3308-Brown-2xl         | Adult Tank - Brown (2xl)                          | 4                      |
| American Apparel | 3308-Pink-2xl          | Adult Tank - Pink (2xl)                           | 6                      |
| American Apparel | 3308-Pink-m/os         | Adult Tank - Pink (m)                             | 1                      |
| American Apparel | 3308-Pink-s            | Adult Tank - Pink (s)                             | 5                      |
| American Apparel | 3308-Pink-xl           | Adult Tank - Pink (xl)                            | 0                      |
| American Apparel | 3308-Red-2xl           | Adult Tank - Red (2xl)                            | 16                     |
| American Apparel | 3308-White-2xl         | Adult Tank - White (2xl)                          | 30                     |
| American Apparel | 3308-White-lg          | Adult Tank - White (lg)                           | 2                      |
| American Apparel | 3308-White-m           | Adult Tank - White (m)                            | 8                      |
| American Apparel | 3308-White-s           | Adult Tank - White (s)                            | 31                     |
| American Apparel | 3308-White-xl          | Adult Tank - White (xl)                           | 7                      |
|                  | <b>3308</b>            | <b>TANK - ADULT</b>                               | <b>211</b>             |
| American Apparel | 4000-Black-12-18m      | Short Sleeve Infant Lap Tee - Black (12-18m)      | 2                      |
| American Apparel | 4000-Black-18-24m      | Short Sleeve Infant Lap Tee - Black (18-24m)      | 0                      |
| American Apparel | 4000-Black-3-6m        | Short Sleeve Infant Lap Tee - Black (3-6m)        | 42                     |
| American Apparel | 4000-Black-6-12m       | Short Sleeve Infant Lap Tee - Black (6-12m)       | 70                     |
| American Apparel | 4000-Blue-12-18m       | Short Sleeve Infant Lap Tee - Baby Blue (12-18m)  | 20                     |
| American Apparel | 4000-Blue-3-6m         | Short Sleeve Infant Lap Tee - Baby Blue (3-6m)    | 36                     |
| American Apparel | 4000-Blue-6-12m        | Short Sleeve Infant Lap Tee - Baby Blue (6-12m)   | 42                     |
| American Apparel | 4000-Lavender-12-18m   | Short Sleeve Infant Lap Tee - Lavender (12-18m)   | 0                      |
| American Apparel | 4000-Lavender-18-24m   | Short Sleeve Infant Lap Tee - Lavender (18-24m)   | 3                      |
| American Apparel | 4000-Light Blue-12-18m | Short Sleeve Infant Lap Tee - Light Blue (12-18m) | 9                      |
| American Apparel | 4000-Navy-12-18m       | Short Sleeve Infant Lap Tee - Navy (12-18m)       | 10                     |
| American Apparel | 4000-Navy-18-24m       | Short Sleeve Infant Lap Tee - Navy (18-24m)       | 10                     |
| American Apparel | 4000-Pink-12-18m       | Short Sleeve Infant Lap Tee - Pink (12-18m)       | 5                      |
| American Apparel | 4000-Pink-18-24m       | Short Sleeve Infant Lap Tee - Pink (18-24m)       | 4                      |
| American Apparel | 4000-Pink-3-6m         | Short Sleeve Infant Lap Tee - Pink (3-6m)         | 8                      |
| American Apparel | 4000-Pink-6-12m        | Short Sleeve Infant Lap Tee - Pink (6-12m)        | 15                     |
| American Apparel | 4000-Red-12-18m        | Short Sleeve Infant Lap Tee - Red (12-18m)        | 14                     |
| American Apparel | 4000-Red-18-24m        | Short Sleeve Infant Lap Tee - Red (18-24m)        | 2                      |
| American Apparel | 4000-White-12-18m      | Short Sleeve Infant Lap Tee - White (12-18m)      | 10                     |



| <u>Brand</u>     | <u>Item Number</u>       | <u>Item Description</u>                           | <u>Actual Quantity</u> |
|------------------|--------------------------|---|------------------------|
| American Apparel | 4000-White-18-24m        | Short Sleeve Infant Lap Tee - White (18-24m)      | 0                      |
| American Apparel | 4000-White-3-6m          | Short Sleeve Infant Lap Tee - White (3-6m)        | 18                     |
| American Apparel | 4000-White-6-12m         | Short Sleeve Infant Lap Tee - White (6-12m)       | 12                     |
|                  | <b>4000</b>              | <b>S/S INFANT LAP TEE</b>                         | <b>332</b>             |
| American Apparel | 4001-Black-12-18m        | Short Sleeve Infant Onesie - Black (12-18m)       | 18                     |
| American Apparel | 4001-Black-18-24m        | Short Sleeve Infant Onesie - Black (18-24m)       | 26                     |
| American Apparel | 4001-Black-3-6m          | Short Sleeve Infant Onesie - Black (3-6m)         | 0                      |
| American Apparel | 4001-Black-6-12m         | Short Sleeve Infant Onesie - Black (6-12m)        | 0                      |
| Rabbit Skins     | 4400-navy-18m            | Short Sleeve Infant Onesie - Navy (18m)           | 0                      |
| American Apparel | 4001-Pink-12-18m         | Short Sleeve Infant Onesie - Pink (12-18m)        | 12                     |
| American Apparel | 4001-Pink-18-24m         | Short Sleeve Infant Onesie - Pink (18-24m)        | 13                     |
| American Apparel | 4001-Pink-3-6m           | Short Sleeve Infant Onesie - Pink (3-6m)          | 0                      |
| American Apparel | 4001-Pink-6-12m          | Short Sleeve Infant Onesie - Pink (6-12m)         | 1                      |
| Rabbit Skins     | 4400-pink-6m             | Short Sleeve Infant Onesie - Pink (6m)            | 1                      |
| American Apparel | 4001-Red-12-18-m         | Short Sleeve Infant Onesie - Red (12-18m)         | 17                     |
| American Apparel | 4001-Red-18-24m          | Short Sleeve Infant Onesie - Red (18-24m)         | 2                      |
| American Apparel | 4001-Red-3-6m            | Short Sleeve Infant Onesie - Red (3-6m)           | 7                      |
| American Apparel | 4001-Red-6-12m           | Short Sleeve Infant Onesie - Red (6-12m)          | 0                      |
| American Apparel | 4001-White-12-18m        | Short Sleeve Infant Onesie - White (12-18m)       | 3                      |
| American Apparel | 4001-White-18-24m        | Short Sleeve Infant Onesie - White (18-24m)       | 126                    |
| American Apparel | 4001-White-3-6m          | Short Sleeve Infant Onesie - White (3-6m)         | 0                      |
| American Apparel | 4001-White-6-12m         | Short Sleeve Infant Onesie - White (6-12m)        | 0                      |
| American Apparel | 4001ORG-Organic-12-18m   | Short Sleeve Infant Organic Onesie - Organic (12- | 0                      |
|                  | <b>4001</b>              | <b>S/S INFANT ONESIE</b>                          | <b>226</b>             |
| American Apparel | 4007-Baby Blue-3-6m      | Long Sleeve Infant Lap Tee - Baby Blue (3-6m)     | 8                      |
| American Apparel | 4007-Baby Blue-6-12m     | Long Sleeve Infant Lap Tee - Baby Blue (6-12m)    | 5                      |
| American Apparel | 4007-Black-12-18m        | Long Sleeve Infant Lap Tee - Black (12-18m)       | 6                      |
| American Apparel | 4007-Black-18-24m        | Long Sleeve Infant Lap Tee - Black (18-24m)       | 25                     |
| American Apparel | 4007-Black-3-6m          | Long Sleeve Infant Lap Tee - Black (3-6m)         | 7                      |
| American Apparel | 4007-Black-6-12m         | Long Sleeve Infant Lap Tee - Black (6-12m)        | 13                     |
| American Apparel | 4007-Heather Grey-12-18m | Long Sleeve Infant Lap Tee - Heather Grey (12-18  | 1                      |
| American Apparel | 4007-Heather Grey-18-24m | Long Sleeve Infant Lap Tee - Heather Grey (18-24  | 0                      |
| American Apparel | 4007-Navy-12-18m         | Long Sleeve Infant Lap Tee - Navy (12-18m)        | 3                      |
| Kavio            | IJC0455-navy-18m         | Crew Neck Long Sleeve - Navy 18 months            | 9                      |
| American Apparel | 4007-Navy-6-12m          | Long Sleeve Infant Lap Tee - Navy (6-12m)         | 18                     |
| American Apparel | 4007-Pink-12-18m         | Long Sleeve Infant Lap Tee - Pink (12-18m)        | 11                     |
| American Apparel | 4007-Pink-18-24m         | Long Sleeve Infant Lap Tee - Pink (18-24m)        | 0                      |
| American Apparel | 4007-Pink-3-6m           | Long Sleeve Infant Lap Tee - Pink (3-6m)          | 48                     |
| American Apparel | 4007-Pink-6-12m          | Long Sleeve Infant Lap Tee - Pink (6-12m)         | 18                     |
| American Apparel | 4007-Red-12-18m          | Long Sleeve Infant Lap Tee - Red (12-18m)         | 5                      |
| American Apparel | 4007-Red-18-24m          | Long Sleeve Infant Lap Tee - Red (18-24m)         | 0                      |



| <u>Brand</u>     | <u>Item Number</u>         | <u>Item Description</u>                     | <u>Actual Quantity</u> |
|------------------|----------------------------|---|------------------------|
| American Apparel | 4007-Red-3-6m              | Long Sleeve Infant Lap Tee - Red (3-6m)     | 4                      |
| American Apparel | 4007-Red-6-12m             | Long Sleeve Infant Lap Tee - Red (6-12m)    | 10                     |
| American Apparel | 4007-White-12-18m          | Long Sleeve Infant Lap Tee - White (12-18m) | 10                     |
| American Apparel | 4007-White-18-24m          | Long Sleeve Infant Lap Tee - White (18-24m) | 12                     |
| American Apparel | 4007-White-3-6m            | Long Sleeve Infant Lap Tee - White (3-6m)   | 21                     |
| American Apparel | 4007-White-6-12m           | Long Sleeve Infant Lap Tee - White (6-12m)  | 17                     |
|                  | <b>4007</b>                | <b>L/S INFANT LAP TEE</b>                   | <b>251</b>             |
| American Apparel | 4041-Black-12-18m          | Long Sleeve Infant Onesie - Black (12-18m)  | 4                      |
| American Apparel | 4041-Black-18-24m          | Long Sleeve Infant Onesie - Black (18-24m)  | 5                      |
| American Apparel | 4041-Black-3-6m            | Long Sleeve Infant Onesie - Black (3-6m)    | 0                      |
| American Apparel | 4041-Black-6-12m           | Long Sleeve Infant Onesie - Black (6-12m)   | 0                      |
| American Apparel | 4041-Lt pink-12-18m        | Long Sleeve Onesie - Lt. Pink (12-18m)      | 4                      |
| American Apparel | 4041-Lt pink-3-6m          | Long Sleeve Infant Onesie - Lt. Pink (3-6m) | 2                      |
| American Apparel | 4041-Pink-18-24m           | Long Sleeve Infant Onesie - Pink (18-24m)   | 6                      |
| American Apparel | 4041-Pink-6-12m            | Long Sleeve Infant Onesie - Pink (6-12m)    | 61                     |
| American Apparel | 4041-Red-12-18m            | Long Sleeve Infant Onesie - Red (12-18m)    | 29                     |
| American Apparel | 4041-Red-18-24m            | Long Sleeve Infant Onesie - Red (18-24m)    | 15                     |
| American Apparel | 4041-Red-3-6m              | Long Sleeve Infant Onesie - Red (3-6m)      | 17                     |
| American Apparel | 4041-Red-6-12m             | Long Sleeve Infant Onesie - Red (6-12m)     | 0                      |
| American Apparel | 4041-White-12-18m          | Long Sleeve Infant Onesie - White (12-18m)  | 6                      |
| American Apparel | 4041-White-18-24m          | Long Sleeve Infant Onesie - White (18-24m)  | 31                     |
| American Apparel | 4041-White-3-6m            | Long Sleeve Infant Onesie - White (3-6m)    | 0                      |
| American Apparel | 4041-White-6-12m           | Long Sleeve Infant Onesie - White (6-12m)   | 11                     |
|                  | <b>4041</b>                | <b>L/S INFANT ONESIE</b>                    | <b>191</b>             |
| <b>Kavio</b>     | 0330-Baby Pink-12m         | Infant Sunflower Dress - Baby Pink (12m)    | 0                      |
| <b>Kavio</b>     | 0330-Baby Pink-18m         | Infant Sunflower Dress - Baby Pink (18m)    | 0                      |
| <b>Kavio</b>     | 0330-White-12m             | Infant Sunflower Dress - White (12m)        | 4                      |
| Kavio            | 0330-White-18m             | Infant Sunflower Dress - White (18m)        | 4                      |
| Kavio            | 0330-White-24m             | Infant Sunflower Dress - White (24m)        | 0                      |
| Kavio            | 0330-White-6m              | Infant Sunflower Dress - White (6m)         | 1                      |
| Kavio            | 0331-Baby Pink-4           | Toddler Sunflower Dress - Baby Pink (4)     | 0                      |
|                  | <b>INFANT/<br/>TODDLER</b> | <b>SUNFLOWER DRESS</b>                      | <b>9</b>               |
| Monag            | 10-0011-pink-12-18         | Girls Short Sleeve Romper - Pink (12-18m)   | 4                      |
| Monag            | 10-0011-pink-18-24         | Girls Short Sleeve Romper - Pink (18-24m)   | 0                      |
| Monag            | 10-0011-white-18-24m       | Girls Short Sleeve Romper - White (18-24m)  | 4                      |
| Monag            | 10-0011-white-3-6m         | Girls Short Sleeve Romper - White (3-6m)    | 0                      |
| Monag            | 10-0011-white-6-12m        | Girls Short Sleeve Romper - White (6-12m)   | 13                     |
|                  | <b>10-0011</b>             | <b>ROMPER</b>                               | <b>21</b>              |



| <u>Brand</u> | <u>Item Number</u>   | <u>Item Description</u>    | <u>Actual<br/>Quantity</u> |
|--------------|----------------------|----------------------------|----------------------------|
| New ICM      | Bib                  | Linen Bib                  | 8.00                       |
|              | <b>BIB</b>           |                            | <b>8</b>                   |
| New ICM      | Diaper Cover-White-m | Diaper Cover - White (med) | 12                         |
| New ICM      | Diaper Cover-White-s | Diaper Cover - White (sm)  | 13                         |
|              | <b>DIAPER COVERS</b> |                            | <b>25</b>                  |
| New ICM      | Pillow               | 8x8 Linen Pillow           | 3                          |
| New ICM      | Pillow-Insert        | Pillow Insert              | 4                          |
|              | <b>PILLOWS</b>       |                            | <b>7</b>                   |

Total pieces

1894